

Mère/Dam

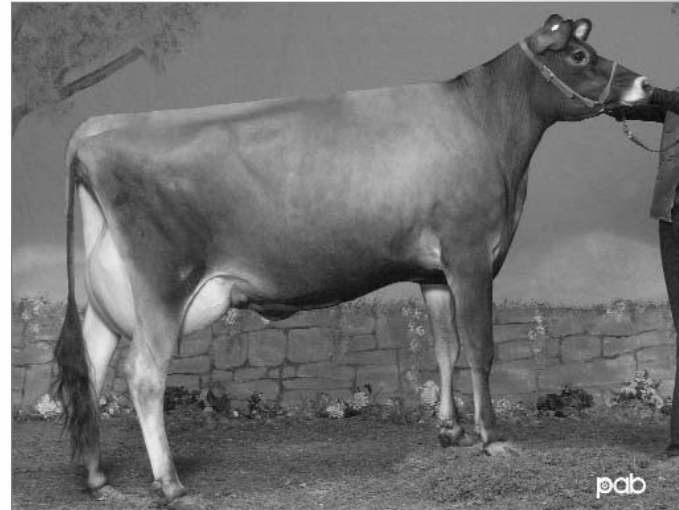


Hautpré Sultan Fame, TB87-2A/VG

1- 305 7559 kg 4,9 % 373 3,5 % 267P (304-280-284)

- Ce jeune taureau provient d'un embryon exporté en Australie. Son père, Senior, est un taureau de deuxième génération de Semex qui maintient sa position parmi les 10 premiers selon l'IPV
- Sa mère, une fille prometteuse du très respecté Sultan, a complété une forte lactation à 1 an 10 mois tout en se classifiant TB87
- Sa grand-mère, une fille de Jade aux productions et taux de gras élevés, se classe actuellement au 9^e rang selon l'IPV

GMM/MGD



Hautpré Jade Farinelli-ET, TB86-2A-2*/VG-2Y

6- 305 11 264 kg 5,3 % 596 3,9 % 436P (338-329-346) proj.

- This young sire is the result of an embryo that was exported to Australia. His sire, Senior, is a second-crop Semex sire that maintains his position among the top 10 sires for LPI
- His dam, a promising daughter of the highly-respected Sultan bull, scored 87 points while making a large record which began as a yearling
- The grandam is a high-milk and high-fat Jade daughter that currently is #9 for LPI

Jersey Canada



BUSHLEA FAXON-ET (MALE) 200 JE 8141

-JEAUSM 587022- PUREBRED

PA: (01/10) +946M, +45F, -0.02% +34P, -0.02% RPT.40%
 CAN-ETA: (01/10) +8 (PA) FC, 37% RPT, 95 RK, +1332(PA) LPI
 SCS: +2.93 (PA), Inbr.Coeff. +8.24%, R-Value: +16%

DNA CASE # : YES - AUSTRALIA
TATTOO:
BORN: April 06, 2008

Breeder: Bushlea Jerseys, Leongatha South AUS
Owner: Semex PTY Ltd., Melton, VIC AUS

PINE HAVEN SENIOR -10211025- EX 90 (3-11)

CAN-EBV: (01/10) +409M, +25F, +0.08% +22P, +0.10% RPT.97%
 CAN-ETA: (01/10) +5 FC, 93% RPT, 78 RK, +1106 LPI
 SCS: +2.79, Inbr.Coeff. +5.14%, R-Value: +16%
 USA: (01/10) -25M +10F 0.06% +6P 0.03% RPT:95
 PTAT(01/10)0.30 RPT:85
 443 prog class 3 EX, 59 VG, 279 GP, 96 G, 6 F, GP+77%

GLENHOLME COUNCILLER -139361- EX -2E (2-3)

CAN-EBV: (01/10) -324M, -9F, +0.11% -8P, +0.07% RPT.99%
 CAN-ETA: (01/10) +6 FC, 96% RPT, 87 RK, +235 LPI
 SCS: +2.87, Inbr.Coeff. +5.65%, R-Value: +16%
 USA: (01/10) -855M -17F 0.13% -21P 0.05% RPT:99
 PTAT(01/10)0.40 RPT:98
 903 prog class 78 EX, 325 VG, 380 GP, 107 G, 12 F, 1 P, GP+87%

PINE HAVEN REP SATIN -10017090- VG 87 (4-0)2*

2 0 305 7841 354 4.51 325 4.14 (324 268 353) GA
 3 2 305 10611 501 4.72 421 3.97 (354 305 369) PA
 4 3 305 10524 440 4.18 404 3.84 (324 246 328) GA
 5 4 305 10004 417 4.17 381 3.81 (285 219 286) SA
 LIFETIME(5LACT 1394DAYS) 43024M, 1904F, 4.43% 1701P, 3.95%
 AVG. BCA:322M, 260F, 334P +89M +40F +92P
 CAN-EBV: (01/10) +809M, +25F, -0.22% +40P, +0.14% RPT.79%
 CAN-ETA: (01/10) +3 FC, 54% RPT, 53 RK, +1197 LPI
 SCS: +2.98, Inbr.Coeff. +2.78%, R-Value: +14%
 1ST JUNIOR TWO YEAR OLD, NEW BRUNSWICK EXPO 1999
 3RD TWO YEAR OLD, ATLANTIC WINTER FAIR 1999

ROCK ELLA PERIMETER ET -139475- EX 90 (2-7)

CAN-EBV: (01/10) +543M, +46F, +0.28% +41P, +0.30% RPT.99%
 CAN-ETA: (01/10) -3 FC, 97% RPT, 20 RK, +1050 LPI
 SCS: +3.03, Inbr.Coeff. +2.96%, R-Value: +18%
 USA: (01/10) -236M +17F 0.16% +16P 0.14% RPT:99
 PTAT(01/10)0.00 RPT:99

PINE HAVEN GROVE SALLY 3 -599091- VG 85 (2-6)

LIFETIME(2LACT 393DAYS) 6292M, 311F, 4.94% 252P, 4.01%
 AVG. BCA:187M, 177F, 194P -6M -7F -8P
 CAN-EBV: (01/10) -633M, -32F, -0.04% -16P, +0.12% RPT.67%
 CAN-ETA: (01/10) +7 FC, 44% RPT, 92 RK, +56 LPI
 SCS: +2.89, Inbr.Coeff. +2.76%, R-Value: +9%

HAUTPRE SULTAN FAME -102878345- VG 87 (2-6)

1 10 305 7559 373 4.93 267 3.53 (304 280 284) SA
 LIFETIME(2LACT 461DAYS) 11529M, 555F, 4.81% 409P, 3.55%
 AVG. BCA:304M, 280F, 284P +91M +73F +71P
 CAN-EBV: (01/10) +1483M, +64F, -0.11% +46P, -0.13% RPT.61%
 CAN-ETA: (01/10) +11 FC, 54% RPT, 99 RK, +1557 LPI
 SCS: +3.07, Inbr.Coeff. +5.85%, R-Value: +15%
 2ND INTERMEDIATE CALF, L'EXPO DE TROIS RIVIERES 2005

SHF CENTURION SULTAN -10201207- EX 92 (5-8)

CAN-EBV: (01/10) +679M, +43F, +0.14% +24P, -0.01% RPT.99%
 CAN-ETA: (01/10) +8 FC, 98% RPT, 95 RK, +970 LPI
 SCS: +2.97, Inbr.Coeff. +6.55%, R-Value: +17%
 USA: (01/10) -5M +26F 0.15% +4P 0.02% RPT:99
 PTAT(01/10)1.70 RPT:99
 1283 prog class 23 EX, 329 VG, 650 GP, 263 G, 18 F, GP+78%

SOONER CENTURION ET -JEUSAM 655767-

CAN-EBV: (01/10) +912M, +46F, +0.02% +36P, +0.03% RPT.98%
 CAN-ETA: (01/10) +5 FC, 96% RPT, 78 RK, +1060 LPI
 SCS: +3.10, Inbr.Coeff. +3.60%, R-Value: +16%
 USA: (01/10) -129M +3F 0.05% +0P 0.02% RPT:99
 PTAT(01/10)1.30 RPT:99

POTWELL JUDE'S SUCCESS 21C -589233- EX 91-2E (4-

LIFETIME(2LACT 610DAYS) 13874M, 743F, 5.36% 532P, 3.83%
 CAN-EBV: (01/10) +389M, +25F, +0.09% +3P, -0.16% RPT.62%
 CAN-ETA: (01/10) +2 FC, 54% RPT, 41 RK, +148 LPI
 SCS: +2.99, Inbr.Coeff. +4.38%, R-Value: +15%

HAUTPRE JADE FARINELLI -ET -101102688- VG 86 (2-5)2*

1 11 305 8385 486 5.80 337 4.02 (323 352 344) PA
 3 4 305 10093 564 5.59 413 4.09 (333 342 359) PA
 5 0 305 10736 547 5.10 464 4.32 (304 286 346) GA
 6 9 133 11264 596 5.29 436 3.87 (338 329 346) (Proj)
 LIFETIME(4LACT 1173DAYS) 37577M, 2044F, 5.44% 1554P, 4.14%
 AVG. BCA:320M, 327F, 350P +53M +73F +66P
 CAN-EBV: (01/10) +1335M, +92F, +0.37% +63P, +0.18% RPT.73%
 CAN-ETA: (01/10) +9 FC, 53% RPT, 98 RK, +2098 LPI
 SCS: +3.10, Inbr.Coeff. +6.17%, R-Value: +13%

GIPRAT BELLES JADE ET -10008436- EX 92 (4-6)

CAN-EBV: (01/10) -250M, +19F, +0.48% -3P, +0.10% RPT.98%
 CAN-ETA: (01/10) +8 FC, 96% RPT, 95 RK, +1031 LPI
 SCS: +2.99, Inbr.Coeff. +2.12%, R-Value: +17%
 USA: (01/10) -1017M -7F 0.23% -24P 0.07% RPT:99
 PTAT(01/10)1.10 RPT:98

RESPONSES FARRIN -10013165- EX 91 (5-2)

3 6 305 8975 428 4.77 375 4.18 (306 266 338) GA
 4 8 305 11918 645 5.41 480 4.03 (385 377 410) PA
 LIFETIME(4LACT 1006DAYS) 30103M, 1548F, 5.14% 1261P, 4.19%
 AVG. BCA:320M, 296F, 352P +6M +9F +15P
 CAN-EBV: (01/10) +872M, +69F, +0.40% +43P, +0.17% RPT.86%
 CAN-ETA: (01/10) +2 FC, 63% RPT, 41 RK, +1105 LPI
 SCS: +3.12, Inbr.Coeff. +3.96%, R-Value: +9%

Russell G. Gammon

Russell G. Gammon
 Executive Secretary
 February 22, 2010