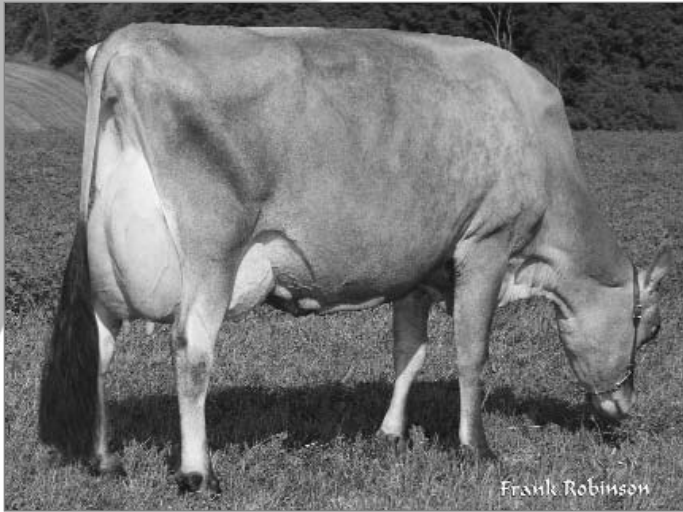


Mère/Dam



Rexlea Centurion Image, Ex.Can 2E
5- 305 12 590 kg 5,0 % 623 3,9 % 487P (382-346-390)

- Le père d'IMPACT, Senior, est un fils de deuxième génération de Counciller qui se maintient parmi les dix meilleurs de la race selon l'IPV
- On peut compter sur lui pour améliorer le système mammaire, la croupe, la production, les composants du lait et les cellules somatiques
- La mère d'IMPACT, classifiée Ex. 2E, se classe actuellement 15^e selon l'IPV et elle présente d'impressionnantes lactations

Soeur maternelle de/Maternal sister to IMPACT



Rexlea Senior Impulse, TB87-2A/VG-2Y
2- 305 6 652 kg 5,5 % 363 4,4 % 293P (265-267-308) proj.

- IMPACT's sire, Senior, is a second-crop Counciller son that maintains his ranking among the breed's top 10 sires for LPI
- He can be depended upon to sire improvement in mammary systems, rumps, milk yield, component tests and somatic cell counts
- IMPACT's Excellent 2E dam is currently the #15 cow for LPI and has an impressive list of lactations.

Jersey Canada

REXLEA IMPACT ET (MALE) 200 JE 157

-9761306- PUREBRED

PA: (01/10) +625M, +53F, +0.33% +34P, +0.15% RPT.42%
 CAN-ETA: (01/10) +6 (PA) FC, 36% RPT, 87 RK, +1538 (PA) LPI
 SCS: +2.88 (PA), Inbr.Coeff. +8.33%, R-Value: +15%

DNA CASE #: DC241653
TATTOO:
BORN: April 01, 2008

Breeder: Rexlea Jerseys Inc, Schomberg, ON
Owner: The Semex Alliance, Guelph, ON



PINE HAVEN SENIOR -10211025- EX 90 (3-11)

CAN-EBV: (01/10) +409M, +25F, +0.08% +22P, +0.10% RPT.97%
 CAN-ETA: (01/10) +5 FC, 93% RPT, 78 RK, +1106 LPI
 SCS: +2.79, Inbr.Coeff. +5.14%, R-Value: +16%
 USA: (01/10) -25M +10F 0.06% +6P 0.03% RPT:95
 PTAT(01/10) 0.30 RPT:85
 375 prog class 3 EX, 56 VG, 229 GP, 82 G, 5 F, GP+77%

GLENHOLME COUNCILLER -139361- EX -2E (2-3)

CAN-EBV: (01/10) -324M, -9F, +0.11% -8P, +0.07% RPT.99%
 CAN-ETA: (01/10) +6 FC, 96% RPT, 87 RK, +235 LPI
 SCS: +2.87, Inbr.Coeff. +5.65%, R-Value: +16%
 USA: (01/10) -855M -17F 0.13% -21P 0.05% RPT:99
 PTAT(01/10) 0.40 RPT:98
 900 prog class 78 EX, 324 VG, 378 GP, 107 G, 12 F, 1 P, GP+87%

PINE HAVEN REP SATIN -10017090- VG 87 (4-0)2*

2 0 305 7841 354 4.51 325 4.14 (324 268 353) GA
 3 2 305 10611 501 4.72 421 3.97 (354 305 369) PA
 4 3 305 10524 440 4.18 404 3.84 (324 246 328) GA
 5 4 305 10004 417 4.17 381 3.81 (285 219 286) SA
 LIFETIME (SLACT 1394DAYS) 43024M, 1904F, 4.43% 1701P, 3.95%
 AVG. BCA: 322M, 260F, 334P +89M +40F +92P
 CAN-EBV: (01/10) +809M, +25F, -0.22% +40P, +0.14% RPT.79%
 CAN-ETA: (01/10) +3 FC, 54% RPT, 53 RK, +1197 LPI
 SCS: +2.98, Inbr.Coeff. +2.78%, R-Value: +14%
 1ST JUNIOR TWO YEAR OLD, NEW BRUNSWICK EXPO 1999
 3RD TWO YEAR OLD, ATLANTIC WINTER FAIR 1999

REXLEA CENTURION IMAGE -8621264- EX 90-2E (5-11)

1 11 305 7628 401 5.26 297 3.89 (302 297 309) GA
 2 11 305 9469 540 5.70 373 3.94 (324 338 336) PA
 4 4 305 11151 665 5.96 423 3.79 (333 367 333) PA
 5 10 305 12590 623 4.95 487 3.87 (382 346 390)
 LIFETIME (4LACT 1645DAYS) 52485M, 2840F, 5.41% 2089P, 3.98%
 AVG. BCA: 335M, 337F, 342P +70M +104F +76P
 CAN-EBV: (01/10) +841M, +81F, +0.57% +45P, +0.19% RPT.72%
 CAN-ETA: (01/10) +7 FC, 50% RPT, 92 RK, +1969 LPI
 SCS: +2.96, Inbr.Coeff. +7.49%, R-Value: +14%

SOONER CENTURION ET -JEUSAM 655767-

CAN-EBV: (01/10) +912M, +46F, +0.02% +36P, +0.03% RPT.98%
 CAN-ETA: (01/10) +5 FC, 96% RPT, 78 RK, +1060 LPI
 SCS: +3.10, Inbr.Coeff. +3.60%, R-Value: +16%
 USA: (01/10) -129M +3F 0.05% +0P 0.02% RPT:99
 PTAT(01/10) 1.30 RPT:99

REXLEA PERIMITER IOLA -10013578- EX 90-3E (6-10)2*

1 11 305 6156 329 5.34 265 4.30 (260 259 294) SA
 2 11 305 8025 430 5.36 350 4.36 (291 285 333) GA
 4 0 305 9114 451 4.95 391 4.29 (299 270 340) GA
 5 4 305 9863 532 5.39 423 4.29 (290 286 328) GA
 LIFETIME (SLACT 1534DAYS) 40836M, 2194F, 5.37% 1766P, 4.32%
 AVG. BCA: 285M, 275F, 324P +60M +77F +91P
 CAN-EBV: (01/10) +240M, +50F, +0.60% +28P, +0.32% RPT.81%
 CAN-ETA: (01/10) +2 FC, 57% RPT, 41 RK, +1288 LPI
 SCS: +3.12, Inbr.Coeff. +2.76%, R-Value: +12%
 1 STAR BROOD COW, MAY 2006
 2ND THREE YEAR OLD, YORK SIMCOE 2000

ROCK ELLA PERIMITER ET -139475- EX 90 (2-7)

CAN-EBV: (01/10) +543M, +46F, +0.28% +41P, +0.30% RPT.99%
 CAN-ETA: (01/10) -3 FC, 97% RPT, 20 RK, +1050 LPI
 SCS: +3.03, Inbr.Coeff. +2.96%, R-Value: +18%
 USA: (01/10) -236M +17F 0.16% +16P 0.14% RPT:99
 PTAT(01/10) 0.00 RPT:99

PINE HAVEN GROVE SALLY 3 -599091- VG 85 (2-6)

LIFETIME (2LACT 393DAYS) 6292M, 311F, 4.94% 252P, 4.01%
 AVG. BCA: 187M, 177F, 194P -6M -7F -8P
 CAN-EBV: (01/10) -633M, -32F, -0.04% -16P, +0.12% RPT.67%
 CAN-ETA: (01/10) +7 FC, 44% RPT, 92 RK, +56 LPI
 SCS: +2.89, Inbr.Coeff. +2.76%, R-Value: +9%

SOLDIERBOY BOOMER SOONER OFCJF -JEUSAM 640

CAN-EBV: (01/10) +1425M, +10F, -0.80% +32P, -0.29% RPT.93%
 CAN-ETA: (01/10) -1 FC, 83% RPT, 36 RK, +36 LPI
 SCS: +3.40, Inbr.Coeff. +0.49%, R-Value: +13%
 USA: (01/10) +178M -32F -0.21% -11P -0.09% RPT:99
 PTAT(01/10) 0.20 RPT:99

MAGIC KAVA KAY GLOVER -JEUSAF 3491547- EX 90

LIFETIME (1LACT 305DAYS) 12061M, 578F, 4.79% 406P, 3.37%
 MACE: (01/10) +669M, +28F, -0.07% +23P, -0.04% RPT.64%
 CAN-ETA: (01/10) -5 (MACE) FC, 40% RPT, 1 RK, +286 (MACE) LPI
 SCS: +2.82 (PA), Inbr.Coeff. +3.21%, R-Value: +15%

ROCK ELLA PERIMITER ET -139475- EX 90 (2-7)

CAN-EBV: (01/10) +543M, +46F, +0.28% +41P, +0.30% RPT.99%
 CAN-ETA: (01/10) -3 FC, 97% RPT, 20 RK, +1050 LPI
 SCS: +3.03, Inbr.Coeff. +2.96%, R-Value: +18%
 USA: (01/10) -236M +17F 0.16% +16P 0.14% RPT:99
 PTAT(01/10) 0.00 RPT:99

REXLEA MERIT INGRID -585284- VG 88 (4-3)1*

4 1 305 6805 362 5.32 285 4.19 (222 216 245)
 6 3 111 6848 317 4.63 268 3.91 (211 180 218) (Proj)
 LIFETIME (SLACT 1392DAYS) 27729M, 1475F, 5.32% 1159P, 4.18%
 AVG. BCA: 211M, 207F, 234P -7M +16F +8P
 CAN-EBV: (01/10) -674M, +1F, +0.56% -12P, +0.21% RPT.73%
 CAN-ETA: (01/10) +0 FC, 53% RPT, 22 RK, +1 LPI
 SCS: +2.97, Inbr.Coeff. +2.41%, R-Value: +7%

Russell G. Gammon

Russell G. Gammon
 Executive Secretary
 February 01, 2010