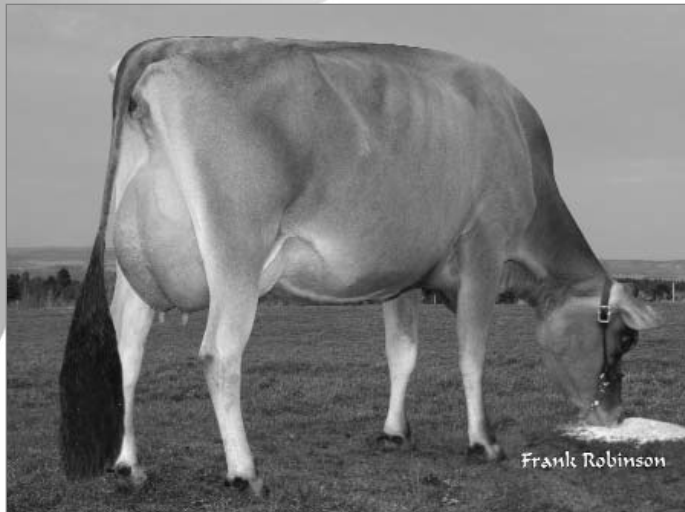


Lencrest **GLASGOW** ET
200JE464 • 105072983

Seville x Golden Boy

Mère/Dam



Lencrest Gold Belle-ET, TB87-2A/VG-2Y
2- 305 9508 kg 5,2 % 495 3,9 % 375P (349-337-364)

- GLASGOW provient de la famille de Declo Belle, Ex.94 qui est 3^e selon l'IPV. Neuf des dix premières vaches selon l'IPV proviennent de cette famille
- Sa mère est présentement 4^e selon l'IPV et est une sœur maternelle des taureaux éprouvés populaires On Time et Blackstone
- Le père de GLASGOW, Seville, est un taureau de Semex éprouvé aux É.-U. Il démontre une habilité pour améliorer le lait et la protéine ainsi que les systèmes mammaires et le caractère laitier

Sœur maternelle de/Maternal sister to GLASGOW



Lencrest Blair Bella-ET, TB86-2A/VG-2Y
2- 305 7244 kg 4,9 % 353 3,6 % 260P (271-247-257)

- GLASGOW is from the family of Declo Belle Ex.94 who is the #3 LPI cow with 9 of the top 10 LPI cows descending from this family
- His dam is currently the #4 LPI cow in Canada and maternal sister to popular proven sires On Time and Blackstone
- The sire of GLASGOW, Seville, is a Semex sire proven in the USA. He shows an ability to improve milk yield and protein test, as well as mammary systems and dairyness

Jersey Canada

LENCREST GLASGOW ET (MALE) 200 JE 464

-105072983- PUREBRED

PA: (08/09) +1671M, +63F, -0.29% +59P, -0.07% RPT.25%
 CAN-ETA: (08/09) +6 (PA) FC, 18% RPT, 85 RK, +1743 (PA) LPI
 SCS: +2.95 (PA), Inbr.Coeff. +12.76%, R-Value: +13%

DNA CASE # : DC234836
TATTOO:
BORN: July 03, 2008

Breeder: Gary & Maureen Bowers, Coaticook, QC
Owner: The Semex Alliance, Guelph, ON



BW SEVILLE -JEUSAM 112984032-

PA: (08/09) +1621M, +36F, -0.63% +57P, -0.07% RPT.35%
 CAN-ETA: (08/09) -1 (PA) FC, 23% RPT, 37 RK, +1137 (PA) LPI
 SCS: +2.85 (PA), Inbr.Coeff. +9.00%, R-Value: +11%
 USA: (08/09) +987M +16F -0.15% +46P 0.06% RPT:74
 PTAT (08/09) 1.10 RPT:76

JENKS BARBER BILL -JEUSAM 110004123-

MACE: (08/09) +1608M, +29F, -0.72% +59P, -0.03% RPT.86%
 CAN-ETA: (08/09) -1 (MACE) FC, 60% RPT, 37 RK, +1063 (MACE) LPI
 SCS: +2.82 (MACE), Inbr.Coeff. +6.89%, R-Value: +14%
 USA: (08/09) +842M +12F -0.14% +31P 0.01% RPT:99
 PTAT (08/09) 0.90 RPT:99
 1 prog class 1 EX, GP+100%

BW FROSTY JUDYANN ET98-ET -JEUSAF 110577009- EX 9

2 11 284 7722 355 4.60 274 3.55(0 0 0)
 3 11 305 9768 426 4.36 353 3.61(0 0 0)
 5 0 305 9559 399 4.17 339 3.55(0 0 0)
 5 10 305 9395 434 4.62 342 3.64(0 0 0)
 LIFETIME (4LACT 1199DAYS) 36444M, 1614F, 4.43% 1308P, 3.59%
 MACE: (08/09) +1634M, +43F, -0.53% +55P, -0.10% RPT.52%
 CAN-ETA: (08/09) +0 (MACE) FC, 32% RPT, 22 RK, +1211 (MACE) LPI
 SCS: +2.88 (MACE), Inbr.Coeff. +3.89%, R-Value: +9%

DAR VIEW SKY LINE FROSTY -JEUSAM 657025-

CAN-EBV: (08/09) +568M, +1F, -0.39% +21P, +0.00% RPT.90%
 CAN-ETA: (08/09) -6 FC, 71% RPT, 6 RK, +117 LPI
 SCS: +2.77, Inbr.Coeff. +6.67%, R-Value: +9%
 USA: (08/09) +264M -6F -0.10% +16P 0.04% RPT:99
 PTAT (08/09) -0.30 RPT:99

BW BERRETTA PRIZE G525 -JEUSAF 3910073- EX 92-4

3 1 305 11622 461 3.97 425 3.66(0 0 0)
 LIFETIME (2LACT 610DAYS) 21131M, 856F, 4.05% 736P, 3.48%
 MACE: (08/09) +1849M, +57F, -0.48% +57P, -0.19% RPT.65%
 CAN-ETA: (08/09) +2 (MACE) FC, 41% RPT, 42 RK, +1375 (MACE) LPI
 SCS: +3.11 (MACE), Inbr.Coeff. +3.95%, R-Value: +10%

LENCREST GOLD BELLE -ET -101962787- VG 87 (2-9)

2 6 305 9508 495 5.21 375 3.94(349 337 364) PA
 4 3 243 8834 430 4.87 344 3.89(260 234 267) (Proj)
 LIFETIME (2LACT 821DAYS) 22008M, 1117F, 5.08% 882P, 4.01%
 AVG. BCA: 349M, 337F, 364P +155M +162F +168P
 CAN-EBV: (08/09) +1721M, +89F, +0.06% +60P, -0.06% RPT.66%
 CAN-ETA: (08/09) +12 FC, 50% RPT, 99 RK, +2349 LPI
 SCS: +3.04, Inbr.Coeff. +10.63%, R-Value: +14%

GOLDEN BOY OF FERREIRA -JEUSAM 665951-

CAN-EBV: (08/09) -84M, +17F, +0.32% -1P, +0.04% RPT.94%
 CAN-ETA: (08/09) +8 FC, 88% RPT, 94 RK, +685 LPI
 SCS: +2.85, Inbr.Coeff. +6.47%, R-Value: +14%
 USA: (08/09) -413M +18F 0.21% -8P 0.04% RPT:99
 PTAT (08/09) 2.40 RPT:99
 117 prog class 4 EX, 37 VG, 60 GP, 16 G, GP+86%

WF/L&M DUNCAN BARBER ET -JEUSAM 654500-

CAN-EBV: (08/09) +1290M, +50F, -0.18% +32P, -0.23% RPT.97%
 CAN-ETA: (08/09) -3 FC, 89% RPT, 20 RK, +595 LPI
 SCS: +2.58, Inbr.Coeff. +7.81%, R-Value: +14%
 USA: (08/09) +280M +21F 0.05% +0P -0.05% RPT:99
 PTAT (08/09) 0.50 RPT:99

GOLDEN MBSB OF TWIN HAVEN-ET -JEUSAF 3868233

LIFETIME (3LACT 813DAYS) 26730M, 1645F, 6.15% 1104P, 4.13%
 MACE: (08/09) +449M, +20F, -0.03% +21P, +0.06% RPT.72%
 CAN-ETA: (08/09) +5 (MACE) FC, 47% RPT, 76 RK, +738 (MACE) LPI
 SCS: +3.20 (MACE), Inbr.Coeff. +9.30%, R-Value: +13%

PIEDMONT DECLO BELLE -10209243- EX 94 (5-4)2*

1 11 305 7816 428 5.48 314 4.02(312 319 331) PA
 3 5 305 9469 534 5.64 367 3.88(321 330 328) PA
 5 3 305 11238 548 4.88 433 3.85(347 311 352) PA
 LIFETIME (3LACT 1246DAYS) 33673M, 1808F, 5.37% 1359P, 4.04%
 AVG. BCA: 327M, 320F, 337P +129M +136F +139P
 CAN-EBV: (08/09) +1956M, +107F, +0.15% +80P, +0.09% RPT.81%
 CAN-ETA: (08/09) +10 FC, 68% RPT, 99 RK, +2523 LPI
 SCS: +3.05, Inbr.Coeff. +5.52%, R-Value: +14%
 NOMINATED ALL CANADIAN 5 YR OLD 2005
 5TH 5 YR OLD, ROYAL WINTER FAIR 2005
 ALL CANADIAN JUNIOR THREE YEAR OLD 2003
 HON.MENTION GRAND CHAMPION & INTERMEDIATE CHAMPION RAWF ..

BARBS MBSB DECLO -JEUSAM 660532-

CAN-EBV: (08/09) +1417M, +14F, -0.76% +47P, -0.08% RPT.94%
 CAN-ETA: (08/09) +2 FC, 81% RPT, 58 RK, +706 LPI
 SCS: +2.90, Inbr.Coeff. +3.60%, R-Value: +12%
 USA: (08/09) +644M -7F -0.20% +20P -0.01% RPT:99
 PTAT (08/09) 0.50 RPT:99

ROCK ELLA BROOK BELLE ET -602088- EX 93 (4-11)3*

3 4 305 8595 444 5.17 351 4.08(272 260 293) SA
 4 5 305 8862 510 5.75 354 3.99(263 280 277) SA
 LIFETIME (4LACT 1324DAYS) 29919M, 1623F, 5.42% 1223P, 4.09%
 AVG. BCA: 269M, 268F, 292P +26M +61F +43P
 CAN-EBV: (08/09) -49M, +41F, +0.66% +10P, +0.19% RPT.79%
 CAN-ETA: (08/09) +8 FC, 63% RPT, 96 RK, +1109 LPI
 SCS: +3.00, Inbr.Coeff. +4.52%, R-Value: +15%

Russell G. Gammon

Russell G. Gammon
 Executive Secretary
 October 28, 2009