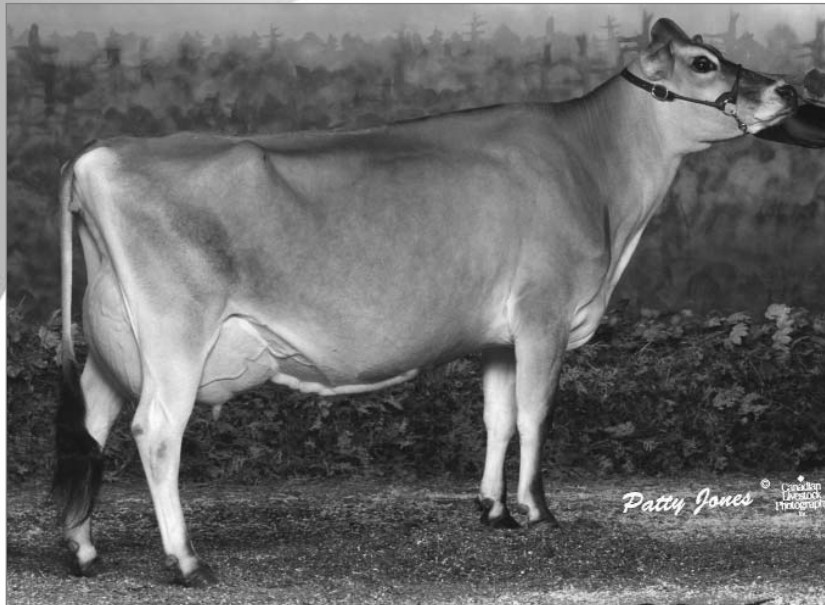


GMM/MGD



Geordawn Lester Colette-P, Ex.2-2E-4*

4- 305 10 432 kg 5,1 % 534 3,9 % 411P (320-300-334)

• Acère •

- CARREL -P représente une source canadienne du gène acère issue d'une solide famille de vaches qui affiche une forte production annuelle et à vie ainsi qu'une conformation impressionnante
- Sa mère, une fille de Brook, a six lactations avec une MCR de 235-233-243 et des fortes déviations par rapport à ses contemporaines. La grand-mère Ex.2-2E-4*, un fille de Lester, est une forte productrice, alors que l'arrière-grand-mère était classifiée Suprême Ex.-3* avec neuf lactations totalisant très près de 60 000 kgL
- CARREL -P a une sœur maternelle Ex.91 qui a complété trois lactations avec une MCR de 262-245-289 avec des déviations de 52L, +49G et +67P



- CARREL-P represents a Canadian source of the polled gene from a strong cow family which boasts high annual and lifetime production along with impressive conformation
- His dam, by Brook, has 6 lactations which average 235-233-243 BCA with strong deviations over herd mates. The grandam was an Ex.2-2E-4* high-producing daughter of Lester, while the 3rd dam was Supreme Ex.-3* with 9 lactations totaling very close to 60 000 kgM
- CARREL -P has an Ex.91 maternal sister that has 3 completed lactations which average 262-245-289 BCA for deviations of +52M, +49F, and +67P

POP

L'avenir dès aujourd'hui

Tomorrow Today

GEORDAWN CARREL-P-ET (MALE) 200 JE 152

-8931990- PUREBRED

PA:(04/09) +514M, +42F,+0.24% +24P,+0.06% RPT.42%
 CAN-ETA:(04/09) +6(PA) FC,34% RPT,85 RK, +1149(PA) LPI
 SCS:+2.81(PA), Inbr.Coeff. +4.49%, R-Value: +13%

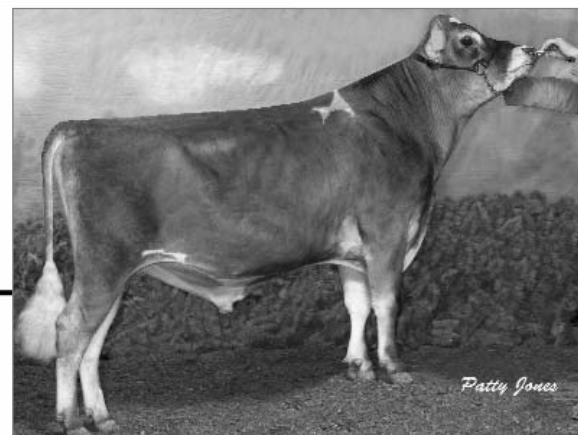
BLOOD NO:

TATTOO: DEM 50T

BORN: September 21, 2007
Senior Yearling

Breeder: George & Dawn Van Kampen, Orangeville, ON

Owner: The Semex Alliance, Guelph, ON



PINE HAVEN SENIOR -10211025- EX 90 (3-11)

CAN-EBV:(04/09) +467M, +28F,+0.08% +28P,+0.15% RPT.93%
 CAN-ETA:(04/09) +10 FC,83% RPT,98 RK, +1513 LPI
 SCS:+2.73, Inbr.Coeff. +5.03%, R-Value: +16%
 USA:(04/09)+93M +21F 0.09% +13P 0.05% RPT:91
 PTAT(04/09)1.20 RPT:79
 100 prog class 3 EX, 24 VG, 56 GP, 15 G, 2 F, GP+83%

GLENHOLME COUNCILLER -139361- EX 2-2E (2-3)

CAN-EBV:(04/09) -289M, -7F,+0.11% -7P,+0.07% RPT.99%
 CAN-ETA:(04/09) +7 FC,96% RPT,89 RK, +335 LPI
 SCS:+2.85, Inbr.Coeff. +5.54%, R-Value: +16%
 USA:(04/09)-573M -3F 0.14% -10P 0.06% RPT:99
 PTAT(04/09)1.00 RPT:98
 876 prog class 70 EX, 315 VG, 371 GP, 107 G, 12 F, 1 P, GP+86%

PINE HAVEN REP SATIN -10017090- VG 87 (4-0)2*

2 0 305 7841 354 4.51 325 4.14 (324 268 353)GA
 3 2 305 10611 501 4.72 421 3.97 (354 305 369)PA
 4 3 305 10524 440 4.18 404 3.84 (324 246 328)GA
 5 4 305 10004 417 4.17 381 3.81 (285 219 286)SA
 LIFETIME(5LACT 1394DAYS) 43024M, 1904F,4.43% 1701P,3.95%
 AVG. BCA:322M, 260F, 334P +89M +40F +92P
 CAN-EBV:(04/09) +716M, +23F,-0.18% +39P,+0.17% RPT.72%
 CAN-ETA:(04/09) +6 FC,53% RPT,81 RK, +1346 LPI
 SCS:+2.97, Inbr.Coeff. +2.72%, R-Value: +14%
 1ST JUNIOR TWO YEAR OLD, NEW BRUNSWICK EXPO 1999
 3RD TWO YEAR OLD, ATLANTIC WINTER FAIR 1999

GEORDAWN BROOK CARLIE-P 7G-ET -10013996- VG 85 (6-

2 1 305 7332 416 5.67 274 3.74 (292 306 288)GA
 3 2 305 7697 404 5.25 303 3.94 (271 261 281)SA
 4 5 305 7418 405 5.46 306 4.13 (236 234 257)
 5 8 305 8236 441 5.35 321 3.90 (231 230 238)
 7 1 305 6541 333 5.09 247 3.78 (189 179 189)
 8 7 305 6561 342 5.21 268 4.08 (190 186 205)
 LIFETIME(6LACT 2773DAYS) 57016M, 3112F,5.46% 2307P,4.05%
 AVG. BCA:235M, 233F, 243P +21M +34F +18P
 CAN-EBV:(04/09) +560M, +55F,+0.40% +19P,-0.03% RPT.76%
 CAN-ETA:(04/09) +2 FC,53% RPT,47 RK, +785 LPI
 SCS:+2.89, Inbr.Coeff. +4.98%, R-Value: +11%

MOLLY BROOK BRASS MAJOR -JEUSAM 644248-

CAN-EBV:(04/09) +393M, +31F,+0.17% +10P,-0.07% RPT.97%
 CAN-ETA:(04/09) +2 FC,88% RPT,62 RK, +248 LPI
 SCS:+3.10, Inbr.Coeff. +1.81%, R-Value: +11%
 USA:(04/09)-102M +25F 0.17% -1P 0.02% RPT:99
 PTAT(04/09)1.30 RPT:99
 157 prog class 22 EX, 53 VG, 60 GP, 18 G, 4 F, GP+86%

GEORDAWN LESTER COLETTE-P -581727- EX 2-2E (5-2)4*

2 2 305 8061 345 4.28 287 3.56 (297 236 279)
 3 3 305 9293 405 4.36 340 3.66 (299 241 288)
 4 7 305 10432 534 5.12 411 3.94 (320 300 334)PA
 5 11 305 3408 202 5.93 162 4.75 (103 112 130)
 LIFETIME(4LACT 1521DAYS) 37502M, 1879F,5.01% 1487P,3.97%
 AVG. BCA:255M, 222F, 258P +56M +46F +54P
 CAN-EBV:(04/09) +305M, +28F,+0.21% +9P,-0.03% RPT.81%
 CAN-ETA:(04/09) -2 FC,61% RPT,10 RK, +243 LPI
 SCS:+2.85, Inbr.Coeff. +2.79%, R-Value: +11%
 PLATINUM AWARD ON 4-7 RECORD
 1 STAR BROOD COW

ROCK ELLA PERIMETER ET -139475- EX 90 (2-7)

CAN-EBV:(04/09) +586M, +48F,+0.28% +43P,+0.31% RPT.99%
 CAN-ETA:(04/09) -2 FC,97% RPT,23 RK, +1161 LPI
 SCS:+3.03, Inbr.Coeff. +2.87%, R-Value: +17%
 USA:(04/09)+53M +35F 0.18% +28P 0.14% RPT:99
 PTAT(04/09)0.60 RPT:99

PINE HAVEN GROVE SALLY 3 -599091- VG 85 (2-6)

LIFETIME(2LACT 393DAYS) 6292M, 311F,4.94% 252P,4.01%
 AVG. BCA:187M, 177F, 194P -6M -7F -8P
 CAN-EBV:(04/09) -752M, -37F,-0.01% -19P,+0.14% RPT.62%
 CAN-ETA:(04/09) +8 FC,44% RPT,96 RK, +61 LPI
 SCS:+2.89, Inbr.Coeff. +2.68%, R-Value: +9%

A-NINE TOP BRASS -JEUSAM 630622-

CAN-EBV:(04/09) +190M, +9F,-0.01% -1P,-0.13% RPT.98%
 CAN-ETA:(04/09) -9 FC,90% RPT,0 RK, -830 LPI
 SCS:+3.03, Inbr.Coeff. +1.56%, R-Value: +12%
 USA:(04/09)-723M -12F 0.12% -25P 0.00% RPT:99
 PTAT(04/09)-0.60 RPT:99

MOLLY BROOK FASCINATOR FLOWER -JEUSAF 3207

4 5 305 8573 444 5.18 320 3.73 (0 0 0)
 5 9 305 8781 517 5.89 358 4.08 (0 0 0)
 6 10 305 10019 579 5.78 393 3.92 (0 0 0)
 9 0 305 10106 553 5.47 366 3.62 (0 0 0)
 LIFETIME(8LACT 2424DAYS) 65550M, 3639P,5.55% 2502P,3.82%

HIGHLAND DUNCAN LESTER -JEUSAM 645454-

CAN-EBV:(04/09) +893M, +29F,-0.21% +26P,-0.12% RPT.99%
 CAN-ETA:(04/09) -4 FC,93% RPT,15 RK, +212 LPI
 SCS:+3.13, Inbr.Coeff. +2.82%, R-Value: +15%
 USA:(04/09)-80M -6F -0.01% -3P 0.00% RPT:99
 PTAT(04/09)0.50 RPT:99

GREAT NINE COOKIE-P -544447- SUP-EX 1 (10-7)3*

LIFETIME(9LACT 2986DAYS) 59988M, 2889F,4.82% 2327P,3.88%
 AVG. BCA:181M, 161F, 181P +6M +4F -1P
 CAN-EBV:(04/09) -604M, -26F,+0.18% -26P,+0.02% RPT.76%
 CAN-ETA:(04/09) -12(MACE) FC,24% RPT,N/A RK, -1274(MACE) LPI
 SCS:+3.01, Inbr.Coeff. +2.11%, R-Value: +7%

Russell G. Gammon

Russell G. Gammon
 Executive Secretary
 April 28, 2009